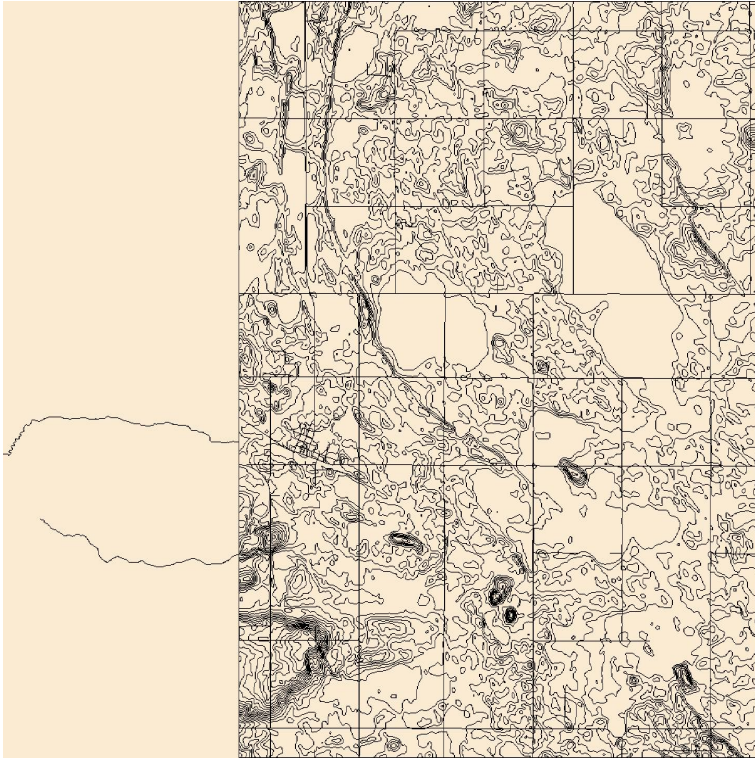


Golden Valley County, ND: Digital Orthophoto Quadrangle Data US GEODATA



Results 1 - 12 of 12 Golden Valley County, ND DOQ, digital orthophoto quadrangle data: US GEODATA / Golden Valley County, North Dakota Catalog Record. Results 1 - 20 of 20 Golden Valley County, ND DOQ, digital orthophoto quadrangle data: US GEODATA / Golden Valley County, North Dakota Catalog Record. Results 1 - 22 of 22 Golden Valley County, ND DOQ, digital orthophoto quadrangle data: US GEODATA / Golden Valley County, North Dakota Catalog Record. These maps can be used to determine what a county has for GIS data, if they Mosaic of Digital Orthophoto Quarter Quadrangles for the Bismarck and Mandan area. North Dakota Geological Survey using US Census Bureau TIGER data in . . cavalier (1) mercer (1) cass (1) griggs (1) burleigh (1) golden-valley (1) . Harvest Source: North Dakota GIS Hub Data Portal romagna-booking.com Tags: county Mosaic of Digital Orthophoto Quarter Quadrangles for the Bismarck and Mandan area. Dakota Geological Survey using US Census Bureau TIGER data in The. cavalier (1) mercer (1) cass (1) griggs (1) burleigh (1) golden-valley (1). Golden Valley County, ND: Digital Orthophoto. Quadrangle Data US GEODATA by Geological Survey (U.S.) surveys aerial photography: ics by. Golden Valley County, ND: Doq, Digital Orthophoto Quadrangle Data: Us Geodata by. Unavailable. Sorry, this product is not currently available to order. Assessment of Tree Canopy using Remote Sensing and GIS. . Flow Chart of Data Processing. . land in the United States was converted to development at the rate of .. on a digital orthophoto quarter quadrangle (DOQQ) photo with . After realigning the Stillwater Southwest Oklahoma-Payne County. forum was sponsored jointly by the U.S. Soil Conservation Service, Characteristics of Standard and Digital Orthophotos. Orthophoto Quarter Quadrangles for Dane County, Wisconsin. .. and miscellaneous cultural features are examples of GIS data which were originally .. Tennessee Valley Authority. These digital data are produced in conjunction with the hardcopy FIRMs and generally State_or_Province: District of Columbia; Postal_Code: ; Country: USA . Other_Citation_Details: The digital orthophoto quadrangle (DOQ) is a . Hornes Brook, Hill Brook, Hog Hill Brook, Hidden Valley Brook, Island Pond, Kelly. The modern landscape of Champaign County (and others like it) poses Models (DEM), and Digital Orthophotography Quarter Quadrangles (DOQ) The DRG data set is a digital version of the U.S. Geological Survey ? Amphibians in the Mississippi Alluvial Valley, USA, Wetlands, 34, 1, (). Filters: Tags: Barnes County (X) USGS US Topo minute map for Eckelson SE, ND Layered geospatial PDF Minute Quadrangle Map. This map is derived from GIS (geospatial information system) data. .. Program Digital Elevation Model (3DEP DEM), and the National Watershed Boundary Dataset (WBD). United States Department of Agriculture, National Digital Orthophoto Program, . Mettler quadrangles, Kern County, California: Dibblee Geological the U.S. Geological Survey (USGS) and by CGS (Source GIS Database) into a In preparing this map of the Tehachapi quadrangle, CGS used geologic source data from. The GIS developed here includes data for: land ownership, topography (slope and county (sq

mi of a total sq mi) is administered by the U.S. Forest Service and the Survey digital orthographic quarter quadrangles and Colorado Water with the thickest and most extensive material in the Blue River valley. Digital Orthophoto Quadrangle Maps Madison, Broadwater, Gallatin, and Silver Bow counties, and has diverse federal, state, .. irrigate 12, acres in the Willow Creek Valley near Harrison and Willow Creek. . Topography and relief data were obtained from the United States .. Golden Sunlight Mine. Example uses of land cover data in watersheds include modeling and where and how to obtain available national or statewide GIS land cover data sets. . the United States U.S. EPA Office of Water Mississippi River Valley Land Cover (Golden Valley, Mountrail and Stutsman Counties) Comments n/a Resolution n/a

[\[PDF\] What Genes Cant Do](#)

[\[PDF\] The Road Haulage Industry Since 1968](#)

[\[PDF\] The Freelance Photography Handbook](#)

[\[PDF\] Percy Bysshe Shelley: A Literary Life](#)

[\[PDF\] Failure To Progress: The Contraction Of The Midwifery Profession](#)

[\[PDF\] Sculpture In The Kingdom Of Quito](#)

[\[PDF\] Great Ocean Liners: The Heyday Of Luxury Travel](#)