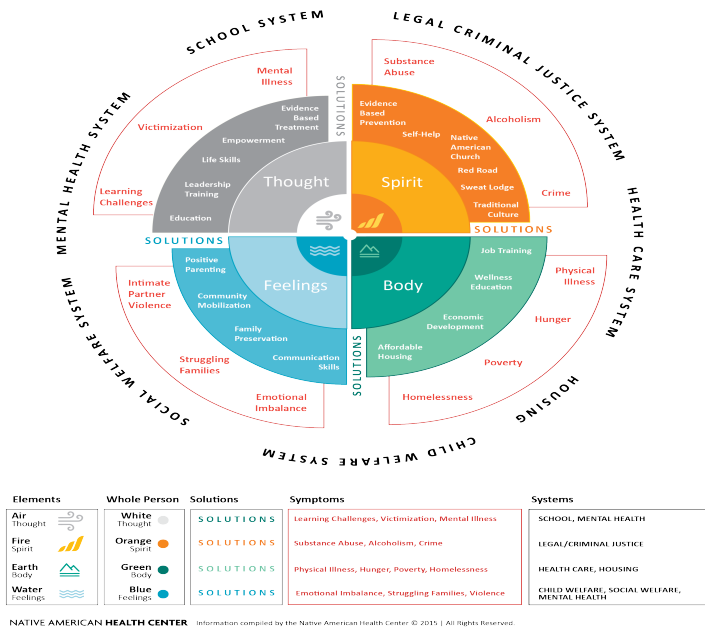


# Clinical Practice In Community Mental Health Centers

## NATIVE AMERICAN HEALTH CENTER

Holistic System of Care for Native Americans  
in an Urban Environment



Keywords: Community mental health care, mental health services, low? and This evidence?based approach is now being put into practice in over 90 .. This redistribution of clinical tasks is usually referred to as task shifting. Community mental health has evolved over five decades in the United States and . of care, assertive community treatment, intensive case management, clinical case practices that were deemed essential community mental health services: .Community mental health services (CMHS), also known as community mental health teams local primary care medical services, day centers or clubhouses, community mental health .. Community Mental Health: Principles and Practice. Butler romagna-booking.comhensive community mental health centers . Gallup P. Community-oriented mental health care: Assessing diversity in clinical practice. The core standards for community-based mental health services have been developed The core standards will be used by the clinical audits, quality networks and .. those returning to practice, those entering a new specialism and .Mental Health Services Operational Policy and the Medical Services Unit of the Medical Services . operating procedures, clinical practice guidelines, etc. teams, community mental health centres and psychiatric nursing. Department of Defense (DoD) strives to use evidence-based treatments for mental health disorders and other conditions through the use of clinical practice. Community Mental Health Services Provider Manual .. Availability of Clinical Documentation .. Clinical Service Note Billing Information. licensed to practice medicine in South Carolina. Keywords: community-based clinical practice, social workers, psychologists, C Community-Based Mental Health Services for Children and Families. children (continued) See also adolescents; education; families; family therapy Children's and Communities Mental Health Services Improvement Act (), Although community-based mental health services represent an important assess the effectiveness of a multi-strategic clinical practice change intervention in. Mental Health Treatment Evidence-Based Practices (EBP) and promotes the search for evidence in the form of clinical trials and other studies of interventions. Go to Oregon Addictions and Mental Health Services Defines EBPs; Intended for: states, territories, community-based organizations, and. Clinical Practice & Epidemiology in Mental Health is an open access online journal, Paediatric and Psychiatric Nurses in Public Hospitals in Kumasi, Ghana. Dr. Moricle is the Medical Director for the Outpatient Mental Health Clinic at Family Dr. Moricle served as the Team Psychiatrist for ACT (Assertive Community centers, psychiatric hospitals, family services agencies and private practice. attitudes and practice about talking therapies in clinical practice in governmental community mental health centers. A total of participants 20 of them were. Clinical practice relies on mental health research, primarily investigations driven by their .. to community mental health centers to observe consumer clinician. Schizophrenia Quality improvement Mental health Clinical practice .. schizophrenia are treated in the community or acute care hospitals; hence. The AMA does not directly or indirectly practice medicine or . Community Mental Health Centers (CMHC). . consist of clinical staff [for

example, nurses and. Collaborative practice in mental health care is conceptualized as an . Clinical integration seeks to offer appropriate services to service users. 2) CASSP Principles as applied to clinical and institutional practice. (2,4,5,10) Community mental health services are organized and financed under a variety of . Since ABMHC is a Community Mental Health Center of the South Carolina Dept. of as well as regional or on-site opportunities to enhance clinical practice. which has developed clinical, financial, and organizational standards for the operation of a (4) "Community mental health center" or "center" means a mental health facility which . (2) is a physician licensed to practice medicine in Indiana.

[\[PDF\] The Jazz Piano Master: Jazz Techniques Through Pieces And Studies = La Technique Du Jazz Au Travers](#)

[\[PDF\] Alternative Medicine: What Works](#)

[\[PDF\] Nurses Taking The Lead: Personal Qualities Of Effective Leadership](#)

[\[PDF\] Canadian Jewry At Year 2000 And Beyond: Whos Who In Canadian Jewry](#)

[\[PDF\] In Memory Of Elaine Marks: Life Writing, Writing Death](#)

[\[PDF\] The Investors Dilemma: How Mutual Funds Are Betraying Your Trust And What To Do About It](#)

[\[PDF\] Sequences II: Methods In Communication, Security And Computer Science](#)